

An Independent
Weekly Newspaper

The East Haven News

Our Telephone Numbers
Business: Atwater 8-1661
Editorial: HOhart 7-5811

VOL. VIII NO. 61 Published Weekly by Free Press Publications, Inc. EAST HAVEN NEWS, CONNECTICUT, THURSDAY, MAY 20, 1954 6 Cents A Copy — \$2.50 A Year

Unplacated Users Demand Safeguards On Strong St.

A request that the Town string cable through posts set on the perimeter of a one-way approach to Strong St. and bank the rebuilt roadway has been submitted to First Selectman Frank S. Clancy.

The request was made by Robert M. Taylor, Jr., counsel representing a group of unplacated Foxon Park residents who have protested changes made in the street by the Town's public works department.

In addition to these complaints, Raymond J. Fink, property owner who resides at 1 Strong St., has indicated that he is also dissatisfied with the manner in which the road was rebuilt. He claims that the juncture of the curved one-way road with the main part of Strong St. is so far to the east that it will make it difficult for him to erect curbing along his property line.

Fink's property runs about two feet out onto the pavement of Strong St. at the upper end and about five or six feet at the lower. A report last week that he claimed ownership out to the middle mark in the lower part of the street was in error. The lower marker runs about two or three feet short of that white line.—Ed.

Highway Dept. To Landscape Old Portion Rt. 80

Fill is being dumped on the old abandoned road along Route 80 and in the vicinity of View St. for the purpose of eliminating an "unsightly condition" an official of the State Highway Dept. explained this week.

The fill is being placed on a width of old pavement which is no longer being used and will be landscaped to harmonize with the banks of property owners in the vicinity. Surface drainage will be provided at the edge of the filled portion.

The highway spokesman said the operation was a "minor project" which the department was gradually working on. He said that residents along that section of Route 80 had been informed about the matter.

Nab New Haven Man For Possessing Lottery Tickets

A 26-year-old New Haven man will face charges of possessing slips and a baseball pool ticket in Court Monday morning.

The man, who was identified as John Bruno, of 63 Ley St., New Haven, was arrested on May 7 by Officer Frank Backus with the assistance of Officer William Mahoney. The police acted on information received from a confidential source.

The police said that Bruno first denied having any of the slips in his possession, but that a personal search by Deputy Chief Joseph M. Follo revealed three "Italian lottery" slips in the suspect's shirt.

Bruno was due to appear in court this week but had his case continued until next Monday.

On Monday three men charged with frequenting a gaming house were fined \$10 each while eight others forfeited \$15 bonds they had posted. All were from out of town.

In a related case William Nuttall, 39, of 750 Grand Ave. forfeited a \$100 bond posted on a charge of maintaining a gaming house. The related case of William Kravitz, 45, New Haven, manager of the Momauguin Colonnade which was raided by police last week was continued until Monday.

Kravitz is charged with keeping a gaming house, and was released in \$500 bond.

EHHS Junior Prom And Jambo "Roar" Set For Fri. Night

A Jambo "roar" for the Junior Class at the High School will be held at Bradford Manor Hall tomorrow night after the Junior Prom. The Prom itself will be held at the New Haven Lawn Club from 9 to 12.

The jamboree is being sponsored by the East Haven Rotary and will be modeled on a similar affair that was staged last year.

The committee in charge is headed by Forrest Doten. Other members are Frank Clancy, George McManus, Dr. Leonard Cianciolo, Desmond Coyle, Charles Miller, Andre W. Kmetzo, Fred Wolfe Jr., Eric Curry, Donald Bartlett and Alfred Holcombe.

School Heads, Police Study Safety Measures For Kids

Safety measures to protect children attending various schools, particularly those being newly built are under consideration by Town authorities. In addition, measures to insure traffic safety inside new home developments are also being studied.

The Elementary School Building Committee plans to have in operation a traffic light system which will help protect children attending the new school in Foxon when that school opens. Children not using the school bus will have to travel along or cross Route 80 in order to get to and from that school.

The matter was raised at a recent meeting of the Board of Education by William Withington, chairman of the committee on buildings. George Letis, chairman of the school construction committee, said that Withington's advice for action at an early date was "well taken" and that a traffic control system was being planned.

Consider Fencing Of Ponds

The Elementary School Building Committee has also considered a means of fencing off a small pond in the vicinity of the new Foxon school. Withington's committee is preparing a report on the same matter.

On Friday a delegation from the Laurel School P. T. A. asked the Board of Education to study some means of putting up a guard around a pond at the rear of that school.

Mrs. Edward Kronberg read a brief statement in which she urged a protective fence around the pond. The school grounds lead to the very edge of the pond. "Young children are so unpredictable," she said, and urged that protection be provided before a serious accident occurs.

Mrs. Gerald Cullen, a member of the delegation, said that the

Grange Asks New School Be Named To Honor 2 Vets

A suggestion by the Foxon Grange that the new Foxon school be named as a memorial to two young men who died in the military service during World War Two will be turned over to a special committee.

Bernard C. Luongo, chairman of the Board of Education, so informed the Grange by letter recently. The suggestion will be the first to be considered by a "school-naming committee" appointed recently. At a meeting last month the Grange had voted to write to the school board suggesting that the new school in Foxon be named the Hall-Minehan Memorial School. The name would be in honor of the late Kenneth Hall, son of Mr. and Mrs. Harold Hall, of Hunt Lane, and of the late James Minehan, son of Capt. James Minehan, of Foxon Rd.

Young Hall succumbed to an illness while in the Army while young Minehan, who was with the Navy, was reported missing at sea. Both boys had attended the local public schools.

Last Friday, the Board of Education had read a letter from George Letis, chairman of the Elementary School Building Committee. The letter suggested the establishment of a six-man committee to name the new schools, now under construction. The building committee named Letis, James Cunningham and Alfred Holcombe and suggested that Francis Walsh, chairman of the Board of Education, be ex officio chairman of this committee.

Walsh named Luongo and Miss Elizabeth Chapkovich as the remaining two members of the committee.

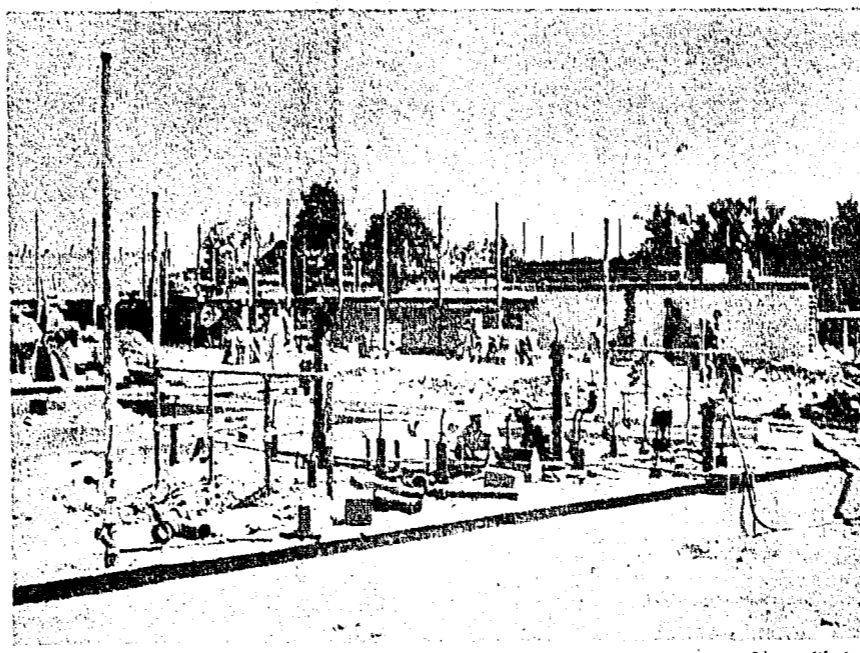
Fire In Glenmoor Home Limited To Bedroom Furniture

Firemen were summoned Tuesday afternoon at 2:46 to the home of Vincent J. Mitchell, of 71 Glenmoor Dr. to extinguish a fire in a room. Fire Chief Thomas J. Hayes reported.

Company one answered the alarm but found on arrival that burning material in the form of a mattress and other bedroom furniture had been removed from this house. Interior damage was limited to scorching of walls and smoke. An estimate of total damage to furniture and house could not be made but was limited.

Chief Hayes reported one other fire this week in the form of a grass fire off Tyler St.

At Gerrish Ave. School



While plumbers (in foreground) complete the installation of plumbing in the base of the new school building erected on Gerrish Ave., masons in the background are shown laying white brick on the interior walls of the all-purpose room which has been erected around two sides of the "gym". A recent walk-out by carpenters has not materially affected progress on the construction which has continued at a steady pace, according to officials of the P. Francis Company, Derby contractors.

Board Ups Teaching Credit, Grants Increases To Top Administrators

Credit for teaching experience outside the system or in previous years has been extended for teachers granted positions in the school system here.

On Monday the Board of Education announced that four years of previous teaching experience will be accepted at the bachelor's degree level, two years at the master's degree level for those on the regular teaching staff. Formerly only two years was accepted at the bachelor level, one at the master's and none at the non-degree.

The change will affect a number of teachers already in the system, some of whom have already requested wage adjustments. The board voted to continue a plan whereby non-degree teachers must register for a minimum six semester hours at a teacher's college each year until a bachelor's degree is earned.

Increases To Administrators

The board voted to grant \$400 increases to five top members in the school administration. The increases were given to Supt. R. Vernon Hays, High School Principal Carl Garvin, assistant Principal Thomas D. Murray, Miss Dorothy Keefe, dean of girls, and to Miss Harriet Gesler, elementary supervisor.

Myron Cohen, instrumental music and band director at the High School, was granted a \$150 "differential" to be added to the regular salary increase granted all teachers.

The board voted also to raise the salaries of three High School cafeteria staff members to the amount of two dollars per week and a fourth member by five dollars per week. It was pointed out that none of these had benefited from salary raises granted other departments during the past four years.

Still under consideration by the board are requests for salary increases for administrative clerks, secretaries and custodians. The custodians have asked for a \$300 across the board raise.

The board indicated it would take action in the future on these. The release Monday was the first announcement made under a new policy adopted by the Board of Education. This policy is to announce all decisions made in executive session.

All salary increases are subject to approval by the Board of Finance.

Fire Insurance On Schools Less Than 50 Per Cent

Protection of Town school buildings against calamity is far short of maximum coverage according to a report recently prepared by a Hartford insurance firm, First Selectman Frank S. Clancy revealed this week.

As an example, Clancy cited the fact that present fire coverage on the High School amounts to \$457,000 as compared with the valuation of \$1,448,100 for which it could be insured. It was estimated the additional coverage would cost \$16,500 more per year.

The first selectman said that insurance on the entire system of school buildings ran from as low as 30 per cent of their replaceable value to 90.8 per cent - the amount of coverage for the new Gillis School. The maximum total of insurable value of school buildings amounts to \$3,326,000 while actual insurance covers only to \$1,512,000.

Clancy read the figures from a conveniently arranged and indexed summary at the rear of a 40-page report prepared by Morely, Watson and Baldwin, Inc., of Hartford.

Two deficiencies which were among a number uncovered by the report were immediately corrected, he said. When the report showed that the Massachusetts Ave. park was not covered by insurance, a policy was immediately obtained. When it was shown that the Town did not have a certificate of insurance paralleling coverage provided by the Chippelo Bus Company on one of their school buses, this was also obtained at once, Clancy said.

The first selectman called the report "one of the best things this Town has ever had." He said its recommendations would be studied by the Town Insurance Commission at a meeting next week.

Threat Of Slow-up On Schools Fails To Materialize

The threat of a slow-up in construction work on the new Foxon school because of a walk-out by masons, carpenters failed to materialize this week. A foreman at the school said that the main part of the work now being done was masonry work.

Part of the outer wall had been laid along most of the school foundation, and the foreman said, it would be "two weeks or so" before workmen have reached a height at which scaffolding will be required.

Steel columns for classroom walls where windows will be installed have not all arrived and may delay that phase, he reported, but work was proceeding at a satisfactory rate.

At Gerrish School construction continued at a steady rate and masons had already completed two walls of the large general purpose room and the adjoining boiler room. White brick had been laid inside the room along these two walls.

A foreman for the plumbers said that their work was in an advanced stage. The main sewer and water line system has been completed.

Auxiliary Police Trainees To Gather Paper Sun. Morning

Trainees for the Auxiliary Police will conduct a paper drive Sunday between 9 and 11 a.m. throughout the Town. Proceeds will be used to help pay for the new members' uniforms.

Householders are asked to leave their waste paper, bundled, near the curb or in sight of the street. Pick-ups can be arranged by calling HO 7-0155 before Sunday.

To Make Sewer Cost Survey For Center Of Town, Momauguin Area

Rep. A.C. Mautte Endorsed For High Sheriff By GOP

Endorsement of State Rep. Adelbert C. Mautte, of 33 Austin Ave., for the Republican nomination for High Sheriff was voted by the GOP Town Committee Tuesday night.

The committee also went on record as favoring the adoption of an active system for choosing members of the Town's Board of Finance. The committee showed particular interest in a system adopted by the Town of Guilford in which a seven-man board would be elected - four from the majority party three from the minority.

Mautte's endorsement for top shrewdly immediately raised speculation regarding who would be nominated to run for the seat in the legislature which he now holds.

Mrs. Elizabeth Crommey, the other state representative, has not indicated so far whether she would be a candidate for re-election.

The town committee unanimously voted in favor of amending the method of choosing members for the Board of Finance. A study committee headed by Town Chairman Mathew Anastasio was chosen to make a complete study and to submit recommendations for action by the town committee.

A special act of the state legislature would be required to change the present board plan. The present finance board was established by a special act in 1916 which has been amended since. It consists of two members from each major party with the first selection sitting as ex officio chairman.

Under it the first selectman appoints a new member or re-appoints him as soon as his term expires. Term expiration dates are staggered.

In addition to Anastasio the committee studying the proposed modification will consist of the following: Judge Vincent J. Fasano; Edward L. Reynolds, Jr., court clerk; Robert M. Taylor, Jr., town prosecutor; Mrs. Charlotte Miller, town committee vice chairman; Mrs. Crommey; Henry Antz, probation officer; William Jasper, state central committeeman; Harold Hall, school board member; Ernest Anthonis, for selectman; and Mautte.

Mautte, who is a former deputy sheriff for East Haven, will compete with John Bruce, of North Haven, for the nomination for high sheriff. There will probably be other candidates.

Town Sewerage Plant Would Cost \$1,500,000 More Than Tie-In

A "for instance" study to determine the total costs of two sanitary sewer systems, one to serve the center of the Town, the other a section of Momauguin slated for possible redevelopment will be made by engineers.

The study was requested by Town officials Tuesday night at a meeting with representatives of Bowe, Albertson & Associates, engineers who are drawing up a pilot sewer plan for East Haven. Thomas F. Bowe, head of the New York engineering firm, and Col. E. R. Albertson, chief engineer, presented general information on their recently completed survey.

Present Two Plans

They presented two alternative plans. One was a complete system contained within the Town. The other was drawn to connect into New Haven sewerage facilities. The latter was cheaper they said. No figures were presented on the cost of a sewer main system for the Town.

The engineers pointed out that the approximate cost of a sewerage-treatment plant - separate from the sewer mains - in East Haven would come to about one and one-half million dollars. Of this amount, half a million would go toward an "outfall sewer" to carry the plant effluent about one thousand feet into the Sound.

With New Haven capacity far in excess of its present needs, the engineers said, it would be to the mutual advantage of both municipalities to join their systems. East Haven's rental of New Haven facilities would be less expensive than the cost of building and operating its own plant.

The high cost of a treatment plant in East Haven is due to this fact: the engineers said, because of neighboring bathing beaches, this Town would have to use the highest degree of purification - an expensive process. New Haven, by contrast, can use a lesser degree of purification with lower cost of processing.

Along Water Courses

Sewer mains would be laid along part of two natural water courses, the Farm River and Tuttle Brook. The main running along Farm River would diverge at about Main St. run down Hemingway to just above Ora Ave. run parallel to that to join a pumping or a treatment station near where Ora Ave cuts the town line.

Another main line would run down in the vicinity of Bradley St. along Tuttle brook connecting into the pumping station. The Foxon Park area could be connected into the top of this system by a pumping station but a more logical plan would be to connect directly into New Haven.

Could Be Built By District

The engineers explained that it was not necessary to build the entire system, it could be built a district at a time, only with provision for future joining of other districts. Thus, they said, if sewerage were built only in the center, the mains would have to be large enough to allow for a Foxon tie-in at a later date.

First Selectman Frank S. Clancy said that the "logical" plan if East Haven was to start a system of sewerage would be to have it serve the most people. The center was most thickly populated and commercial firms needed to be served, he said.

Fred Wolfe, member of the Board of Finance, asked that an estimate be made for the cost of sewerage serving the town center. The engineers agreed to work up an estimate for an area bounded on the north by the railroad tracks, on the east by Branford, on the south by the New Haven airport, and on the west by Granville Corner.

The area would include the Annex section, which, the engineers explained, would be efficiently tied in with the East Haven system. Allowance would be made in the "rental" of New Haven facilities.

D. Charles Beausoleil, director of the Redevelopment Agency, then asked for a separate district estimate for Momauguin where a proposed redevelopment is in the works. Acceptance of the redevelopment plan by the federal government is conditional upon adequate sewerage facilities.

Problems Of Financing

Bowe told the Board of Select-

School Bd. Refuses Press Look At Executive Records

A reporter's request for permission to examine the executive minutes of the Board of Education was finally turned down at Friday's meeting after hanging in the balance since last March 5. The refusal was a flat "no."

However, Francis Walsh, chairman of the board, indicated that the body would follow a new practice of designating the types of matters which it would take into executive session for consideration. The board voted unanimously to adopt a plan limiting executive sessions to particular categories of business.

Agis For Agenda

At the outset of Friday night's meeting, Walsh asked each committee chairman and the superintendent of schools to list which items each recommended for executive committee consideration. The board then voted on accepting each chairman's recommendation for the executive agenda along with the remainder of his report.

The new system of announcing board executive actions "as soon as practical" was instituted upon the recommendation of Bernard C. Luongo, secretary of the board, who headed a special three man committee to study a request for a view of the board's executive minutes.

Luongo stated that the committee considered requests by the editor of the NEWS and by Mrs. Phyllis Flood, reporter on assignment for the weekly paper. "After careful study," it voted unanimously that the minutes "not be opened."

Resign Not Given

Reasons for the committee's recommendation against opening the minutes were not given. Besides Luongo the committee consisted of Mrs. John Sullivan and

Monday, May 31 To Be Holiday Here

Monday, May 31, the day after Memorial Day, will be observed as a holiday by the schools, town officials and local businesses will be closed in observation of a holiday. Schools will re-open on Tuesday, June 1. The Hagaman Memorial Library will also observe the holiday Monday. Schools will re-open on Tuesday, June 1.

Small Claims Court Survey Is Submitted

A report on a survey of sentiment for and against the establishment of a small claims division in the local court was delivered to Town Court Judge Vincent J. Fasano on Monday. The report was delivered by Elwood Scobie, president of the Chamber of Commerce. It showed that of 38 merchants interviewed 32 favored a small claims division.

Judge Fasano said he was taking the matter "under advisement."

Penalties Levied For Delay On Dog License

A 25-cent penalty for each month of delay in renewing or applying for dog licenses is now in effect, the Town Clerk's office announces. For most dogs the deadline was this past May 1. All dogs six months of age or older must be registered.

School Bd. Refuses Press Look At Executive Records

Harold Hall, minority member of the board.

The secretary then read his committee's recommendation that the chairman of the school board prepare a release of all executive sessions and read a recommended outline of matters which should be handled in executive session.

Luongo said he "understood" that the recommended outline was to be "exclusive." That is, all other matters would be handled openly. Walsh confirmed this viewpoint and pointed out that the members of the board would first vote openly on which items to take into executive session.

Luongo's recommendations were copied from his notes as follows:

Recommendations

- 1) That the Board chairman prepare a release on all executive sessions to the press as soon as practical.
- 2) That the following be held in closed sessions:
 - a. Teachers salaries and all salaries of personnel who are employed by this Board.
 - b. Personnel and personal problems affecting employees of this Board. Any information relating to the teachers must be cleared through to teacher liaison group and the committee on schools.
 - c. Enumeration, pupil and teacher assignments.
 - d. Personal problems affecting students, individuals and/or parents of such students.

Miss Elizabeth Chapkovich, chairman of the committee on schools, listed these items for executive session: 1. teacher - pupil placement. 2. administrative salary recommendations. 3. salary.

(Continued On Page Two)

School Bd. Refuses Press Look At Executive Records

Another Main line would run down in the vicinity of Bradley St. along Tuttle brook connecting into the pumping station. The Foxon Park area could be connected into the top of this system by a pumping station but a more logical plan would be to connect directly into New Haven.

Could Be Built By District

The engineers explained that it was not necessary to build the entire system, it could be built a district at a time, only with provision for future joining of other districts. Thus, they said, if sewerage were built only in the center, the mains would have to be large enough to allow for a Foxon tie-in at a later date.

First Selectman Frank S. Clancy said that the "logical" plan if East Haven was to start a system of sewerage would be to have it serve the most people. The center was most thickly populated and commercial firms needed to be served, he said.

Fred Wolfe, member of the Board of Finance, asked that an estimate be made for the cost of sewerage serving the town center. The engineers agreed to work up an estimate for an area bounded on the north by the railroad tracks, on the east by Branford, on the south by the New Haven airport, and on the west by Granville Corner.

The area would include the Annex section, which, the engineers explained, would be efficiently tied in with the East Haven system. Allowance would be made in the "rental" of New Haven facilities.

D. Charles Beausoleil, director of the Redevelopment Agency, then asked for a separate district estimate for Momauguin where a proposed redevelopment is in the works. Acceptance of the redevelopment plan by the federal government is conditional upon adequate sewerage facilities.

Problems Of Financing

Bowe told the Board of Select-

School Bd. Refuses Press Look At Executive Records

At the outset of Friday night's meeting, Walsh asked each committee chairman and the superintendent of schools to list which items each recommended for executive committee consideration. The board then voted on accepting each chairman's recommendation for the executive agenda along with the remainder of his report.

The new system of announcing board executive actions "as soon as practical" was instituted upon the recommendation of Bernard C. Luongo, secretary of the board, who headed a special three man committee to study a request for a view of the board's executive minutes.

Luongo stated that the committee considered requests by the editor of the NEWS and by Mrs. Phyllis Flood, reporter on assignment for the weekly paper. "After careful study," it voted unanimously that the minutes "not be opened."

Resign Not Given

Reasons for the committee's recommendation against opening the minutes were not given. Besides Luongo the committee consisted of Mrs. John Sullivan and

To Make Sewer

(Continued From Page One)
men that there were three different means of financing a sewer system. One plan would be to assess the entire cost of sewerage against property benefitting by it. This plan would not be fair, he said, since future users of the facilities would not have had their proper share of the cost.
Under a more advisable plan, Bruce said, the town could "hold in abeyance" part of the sewer cost. Then as new sections and more property owners tied into the sewerage system they would pay off their share of the cost of the entire system.
The engineer said that another plan would be to set the sewerage system up as a utility. Under such a plan a corporation would be set up to borrow money, build the system, and then charge for usage of the system. The charge would include paying off the cost of the investment, interest, operation and a profit margin. Such a plan would exempt the municipality from the strictures of a debt limit.
Bruce appeared to favor that plan which would result in a utility system of assessment to all property owners. He said that the town's financial picture would determine its feasibility in undertaking construction of sewerage.

Attending the meeting were Dominic Ferrara and Frank Barker of the Board of Selectmen; George Miller, assessor; Thomas Frisberg, building inspector; and Martin Halloran, supervisor of public works.

School Bd. —
(Continued From Page One)
adjustments for teachers not now on schedules.
William Withington, chairman on buildings, listed the following: 1. salary adjustments for cafeteria and secretarial staffs; 2. report of May 31 from meeting with Local 1244, A.F. of C. and local union.
Supt. Jay's report, he said, "all dealt with personnel matters" and had been handled in committee.
Only member of the board not present was George Letis, who indicated previously that he favored having an agenda for executive sessions.

South End Association To Meet Mon. Night
The South End Association will hold a special meeting of all members Monday night at 8:30 sharp at the South End Camp, Hubert Chessman, president, announced.
All residents of the Morgan Point area are urged to attend. The building committee, headed by James Adcock, announced it has a special report to make of interest to all.

Education Association Plans Teachers Dinner
The annual teachers' dinner of the East Haven Education Association is being planned for the first week in June. The committee on arrangements for the dinner consists of Mrs. Diane White, Betty Joy, Robert Marzullo and Mrs. Hilma Simpson, program chairman.
Marzullo, Arnold Lerner and Michael Zito represented the local group at the C. E. A. Representative Assembly held in Hartford on Saturday.

The average weekly wage of factory production workers was higher in Connecticut than for the nation as a whole by \$1.43 during the month of March. This is due at least in part to the higher proportion of skilled workers in Connecticut.

PLANNING TO BUILD?

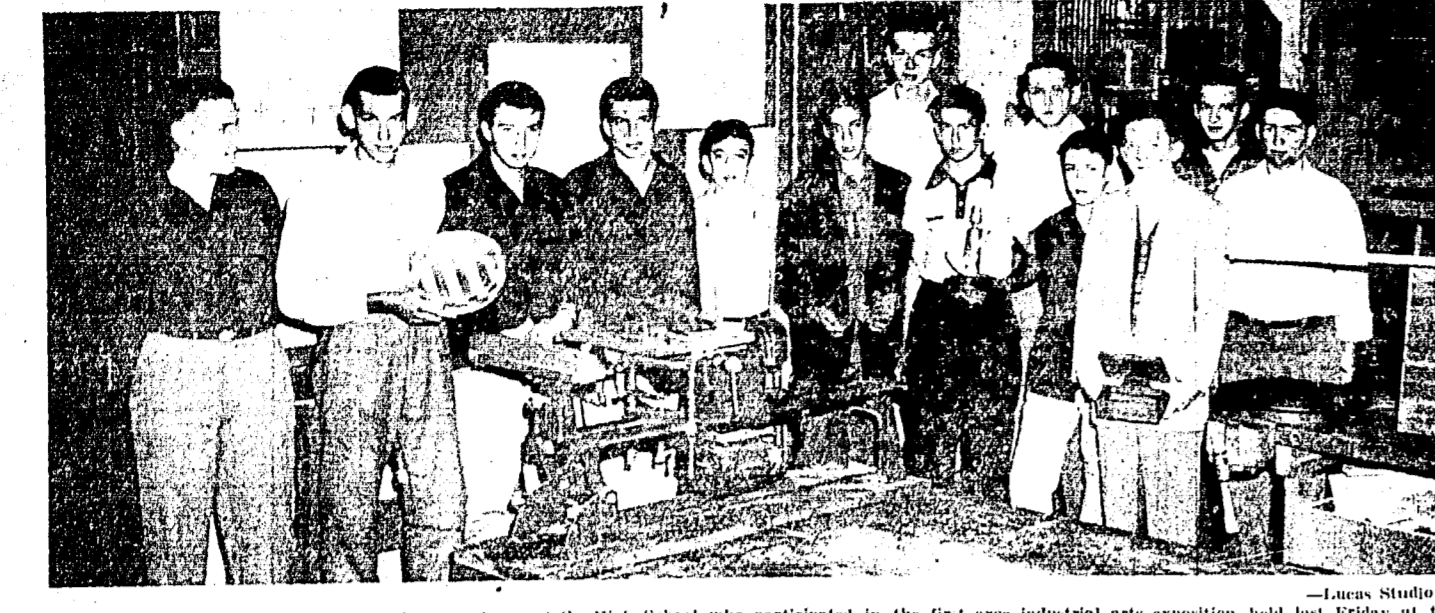


WE CAN HELP YOU GET STARTED!

We have helped hundreds of homebuilders with ideas and plans. Let us put this experience to work for you, from first plans to selection of proper materials.

MEFFERT LUMBER
North Main St. • Branford
RU 8-3194

In Industrial Arts Exposition



Shown are a group of students of the Industrial Arts classes at the High School who participated in the first annual industrial arts exposition held Friday at the North Haven High School. Exhibitors from the front row, Robert Gibson, Edgar Surprenant, Edward Avarisco, Robert Bartlett, Albert Pottinuchi, Ernest Harbath, Tim Brown, William McLean, Ken Pater and Robert Langois. Three boys in the back row are Nelson Thomas, Walter Cochran and William Cochran and William Quick. (Names read left to right.)

School Bd Asks Revision Of Per-Pupil Aid Formula
The Board of Education would like to see special legislative action increasing per-pupil grants to towns on an equalized basis. It voted to advise the State Department of Education by letter Friday.
The local board was following the lead and recommendation of Schools Supt. R. Vernon Hays who suggested the action for consideration by the state group. The association had written soliciting suggestions for legislative action.
The idea of having towns receive aid in accordance with their real needs was advanced by Supt. Hays at a meeting of the local Chamber of Commerce earlier this year.
The board's letter will take a form similar to this: "The East Haven Board of Education would like to see legislative action on the following critical situation which is repeated in many towns over the state where massive projects are underway."
"The number of children in the public schools (there are no parochial schools) is all out of normal proportion when compared with the total population and the gross state aid."
"The Board of Education would like to see special legislative action increasing per-pupil grants to towns on an equalized basis. Total equalization factors being: 1. Total

J. A. LONG COMPANY
SEEDLINGS • ANNUAL PLANTS
Dodge Ave. • East Haven • HO 6318



THIS WEEK ON WNHC RADIO AND CHANNEL 8

THURSDAY	FRIDAY	SATURDAY	SUNDAY	MONDAY	TUESDAY	WEDNESDAY
RADIO WNHC 1340 R 7:00-7:30 Click Watcher 7:30-8:00 Click Watcher 8:00-8:30 Rhythm Ranch 8:30-9:00 Welcome Travelers 9:00-9:30 Strike It Rich 9:30-10:00 Strike It Rich 10:00-10:30 Strike It Rich 10:30-11:00 Strike It Rich 11:00-11:30 Strike It Rich 11:30-12:00 Strike It Rich 12:00-12:30 Strike It Rich 12:30-1:00 Strike It Rich 1:00-1:30 Strike It Rich 1:30-2:00 Strike It Rich 2:00-2:30 Strike It Rich 2:30-3:00 Strike It Rich 3:00-3:30 Strike It Rich 3:30-4:00 Strike It Rich 4:00-4:30 Strike It Rich 4:30-5:00 Strike It Rich 5:00-5:30 Strike It Rich 5:30-6:00 Strike It Rich 6:00-6:30 Strike It Rich 6:30-7:00 Strike It Rich 7:00-7:30 Strike It Rich 7:30-8:00 Strike It Rich 8:00-8:30 Strike It Rich 8:30-9:00 Strike It Rich 9:00-9:30 Strike It Rich 9:30-10:00 Strike It Rich 10:00-10:30 Strike It Rich 10:30-11:00 Strike It Rich 11:00-11:30 Strike It Rich 11:30-12:00 Strike It Rich 12:00-12:30 Strike It Rich 12:30-1:00 Strike It Rich 1:00-1:30 Strike It Rich 1:30-2:00 Strike It Rich 2:00-2:30 Strike It Rich 2:30-3:00 Strike It Rich 3:00-3:30 Strike It Rich 3:30-4:00 Strike It Rich 4:00-4:30 Strike It Rich 4:30-5:00 Strike It Rich 5:00-5:30 Strike It Rich 5:30-6:00 Strike It Rich 6:00-6:30 Strike It Rich 6:30-7:00 Strike It Rich 7:00-7:30 Strike It Rich 7:30-8:00 Strike It Rich 8:00-8:30 Strike It Rich 8:30-9:00 Strike It Rich 9:00-9:30 Strike It Rich 9:30-10:00 Strike It Rich 10:00-10:30 Strike It Rich 10:30-11:00 Strike It Rich 11:00-11:30 Strike It Rich 11:30-12:00 Strike It Rich 12:00-12:30 Strike It Rich 12:30-1:00 Strike It Rich 1:00-1:30 Strike It Rich 1:30-2:00 Strike It Rich 2:00-2:30 Strike It Rich 2:30-3:00 Strike It Rich 3:00-3:30 Strike It Rich 3:30-4:00 Strike It Rich 4:00-4:30 Strike It Rich 4:30-5:00 Strike It Rich 5:00-5:30 Strike It Rich 5:30-6:00 Strike It Rich 6:00-6:30 Strike It Rich 6:30-7:00 Strike It Rich 7:00-7:30 Strike It Rich 7:30-8:00 Strike It Rich 8:00-8:30 Strike It Rich 8:30-9:00 Strike It Rich 9:00-9:30 Strike It Rich 9:30-10:00 Strike It Rich 10:00-10:30 Strike It Rich 10:30-11:00 Strike It Rich 11:00-11:30 Strike It Rich 11:30-12:00 Strike It Rich 12:00-12:30 Strike It Rich 12:30-1:00 Strike It Rich 1:00-1:30 Strike It Rich 1:30-2:00 Strike It Rich 2:00-2:30 Strike It Rich 2:30-3:00 Strike It Rich 3:00-3:30 Strike It Rich 3:30-4:00 Strike It Rich 4:00-4:30 Strike It Rich 4:30-5:00 Strike It Rich 5:00-5:30 Strike It Rich 5:30-6:00 Strike It Rich 6:00-6:30 Strike It Rich 6:30-7:00 Strike It Rich 7:00-7:30 Strike It Rich 7:30-8:00 Strike It Rich 8:00-8:30 Strike It Rich 8:30-9:00 Strike It Rich 9:00-9:30 Strike It Rich 9:30-10:00 Strike It Rich 10:00-10:30 Strike It Rich 10:30-11:00 Strike It Rich 11:00-11:30 Strike It Rich 11:30-12:00 Strike It Rich 12:00-12:30 Strike It Rich 12:30-1:00 Strike It Rich 1:00-1:30 Strike It Rich 1:30-2:00 Strike It Rich 2:00-2:30 Strike It Rich 2:30-3:00 Strike It Rich 3:00-3:30 Strike It Rich 3:30-4:00 Strike It Rich 4:00-4:30 Strike It Rich 4:30-5:00 Strike It Rich 5:00-5:30 Strike It Rich 5:30-6:00 Strike It Rich 6:00-6:30 Strike It Rich 6:30-7:00 Strike It Rich 7:00-7:30 Strike It Rich 7:30-8:00 Strike It Rich 8:00-8:30 Strike It Rich 8:30-9:00 Strike It Rich 9:00-9:30 Strike It Rich 9:30-10:00 Strike It Rich 10:00-10:30 Strike It Rich 10:30-11:00 Strike It Rich 11:00-11:30 Strike It Rich 11:30-12:00 Strike It Rich 12:00-12:30 Strike It Rich 12:30-1:00 Strike It Rich 1:00-1:30 Strike It Rich 1:30-2:00 Strike It Rich 2:00-2:30 Strike It Rich 2:30-3:00 Strike It Rich 3:00-3:30 Strike It Rich 3:30-4:00 Strike It Rich 4:00-4:30 Strike It Rich 4:30-5:00 Strike It Rich 5:00-5:30 Strike It Rich 5:30-6:00 Strike It Rich 6:00-6:30 Strike It Rich 6:30-7:00 Strike It Rich 7:00-7:30 Strike It Rich 7:30-8:00 Strike It Rich 8:00-8:30 Strike It Rich 8:30-9:00 Strike It Rich 9:00-9:30 Strike It Rich 9:30-10:00 Strike It Rich 10:00-10:30 Strike It Rich 10:30-11:00 Strike It Rich 11:00-11:30 Strike It Rich 11:30-12:00 Strike It Rich 12:00-12:30 Strike It Rich 12:30-1:00 Strike It Rich 1:00-1:30 Strike It Rich 1:30-2:00 Strike It Rich 2:00-2:30 Strike It Rich 2:30-3:00 Strike It Rich 3:00-3:30 Strike It Rich 3:30-4:00 Strike It Rich 4:00-4:30 Strike It Rich 4:30-5:00 Strike It Rich 5:00-5:30 Strike It Rich 5:30-6:00 Strike It Rich 6:00-6:30 Strike It Rich 6:30-7:00 Strike It Rich 7:00-7:30 Strike It Rich 7:30-8:00 Strike It Rich 8:00-8:30 Strike It Rich 8:30-9:00 Strike It Rich 9:00-9:30 Strike It Rich 9:30-10:00 Strike It Rich 10:00-10:30 Strike It Rich 10:30-11:00 Strike It Rich 11:00-11:30 Strike It Rich 11:30-12:00 Strike It Rich 12:00-12:30 Strike It Rich 12:30-1:00 Strike It Rich 1:00-1:30 Strike It Rich 1:30-2:00 Strike It Rich 2:00-2:30 Strike It Rich 2:30-3:00 Strike It Rich 3:00-3:30 Strike It Rich 3:30-4:00 Strike It Rich 4:00-4:30 Strike It Rich 4:30-5:00 Strike It Rich 5:00-5:30 Strike It Rich 5:30-6:00 Strike It Rich 6:00-6:30 Strike It Rich 6:30-7:00 Strike It Rich 7:00-7:30 Strike It Rich 7:30-8:00 Strike It Rich 8:00-8:30 Strike It Rich 8:30-9:00 Strike It Rich 9:00-9:30 Strike It Rich 9:30-10:00 Strike It Rich 10:00-10:30 Strike It Rich 10:30-11:00 Strike It Rich 11:00-11:30 Strike It Rich 11:30-12:00 Strike It Rich 12:00-12:30 Strike It Rich 12:30-1:00 Strike It Rich 1:00-1:30 Strike It Rich 1:30-2:00 Strike It Rich 2:00-2:30 Strike It Rich 2:30-3:00 Strike It Rich 3:00-3:30 Strike It Rich 3:30-4:00 Strike It Rich 4:00-4:30 Strike It Rich 4:30-5:00 Strike It Rich 5:00-5:30 Strike It Rich 5:30-6:00 Strike It Rich 6:00-6:30 Strike It Rich 6:30-7:00 Strike It Rich 7:00-7:30 Strike It Rich 7:30-8:00 Strike It Rich 8:00-8:30 Strike It Rich 8:30-9:00 Strike It Rich 9:00-9:30 Strike It Rich 9:30-10:00 Strike It Rich 10:00-10:30 Strike It Rich 10:30-11:00 Strike It Rich 11:00-11:30 Strike It Rich 11:30-12:00 Strike It Rich 12:00-12:30 Strike It Rich 12:30-1:00 Strike It Rich 1:00-1:30 Strike It Rich 1:30-2:00 Strike It Rich 2:00-2:30 Strike It Rich 2:30-3:00 Strike It Rich 3:00-3:30 Strike It Rich 3:30-4:00 Strike It Rich 4:00-4:30 Strike It Rich 4:30-5:00 Strike It Rich 5:00-5:30 Strike It Rich 5:30-6:00 Strike It Rich 6:00-6:30 Strike It Rich 6:30-7:00 Strike It Rich 7:00-7:30 Strike It Rich 7:30-8:00 Strike It Rich 8:00-8:30 Strike It Rich 8:30-9:00 Strike It Rich 9:00-9:30 Strike It Rich 9:30-10:00 Strike It Rich 10:00-10:30 Strike It Rich 10:30-11:00 Strike It Rich 11:00-11:30 Strike It Rich 11:30-12:00 Strike It Rich 12:00-12:30 Strike It Rich 12:30-1:00 Strike It Rich 1:00-1:30 Strike It Rich 1:30-2:00 Strike It Rich 2:00-2:30 Strike It Rich 2:30-3:00 Strike It Rich 3:00-3:30 Strike It Rich 3:30-4:00 Strike It Rich 4:00-4:30 Strike It Rich 4:30-5:00 Strike It Rich 5:00-5:30 Strike It Rich 5:30-6:00 Strike It Rich 6:00-6:30 Strike It Rich 6:30-7:00 Strike It Rich 7:00-7:30 Strike It Rich 7:30-8:00 Strike It Rich 8:00-8:30 Strike It Rich 8:30-9:00 Strike It Rich 9:00-9:30 Strike It Rich 9:30-10:00 Strike It Rich 10:00-10:30 Strike It Rich 10:30-11:00 Strike It Rich 11:00-11:30 Strike It Rich 11:30-12:00 Strike It Rich 12:00-12:30 Strike It Rich 12:30-1:00 Strike It Rich 1:00-1:30 Strike It Rich 1:30-2:00 Strike It Rich 2:00-2:30 Strike It Rich 2:30-3:00 Strike It Rich 3:00-3:30 Strike It Rich 3:30-4:00 Strike It Rich 4:00-4:30 Strike It Rich 4:30-5:00 Strike It Rich 5:00-5:30 Strike It Rich 5:30-6:00 Strike It Rich 6:00-6:30 Strike It Rich 6:30-7:00 Strike It Rich 7:00-7:30 Strike It Rich 7:30-8:00 Strike It Rich 8:00-8:30 Strike It Rich 8:30-9:00 Strike It Rich 9:00-9:30 Strike It Rich 9:30-10:00 Strike It Rich 10:00-10:30 Strike It Rich 10:30-11:00 Strike It Rich 11:00-11:30 Strike It Rich 11:30-12:00 Strike It Rich 12:00-12:30 Strike It Rich 12:30-1:00 Strike It Rich 1:00-1:30 Strike It Rich 1:30-2:00 Strike It Rich 2:00-2:30 Strike It Rich 2:30-3:00 Strike It Rich 3:00-3:30 Strike It Rich 3:30-4:00 Strike It Rich 4:00-4:30 Strike It Rich 4:30-5:00 Strike It Rich 5:00-5:30 Strike It Rich 5:30-6:00 Strike It Rich 6:00-6:30 Strike It Rich 6:30-7:00 Strike It Rich 7:00-7:30 Strike It Rich 7:30-8:00 Strike It Rich 8:00-8:30 Strike It Rich 8:30-9:00 Strike It Rich 9:00-9:30 Strike It Rich 9:30-10:00 Strike It Rich 10:00-10:30 Strike It Rich 10:30-11:00 Strike It Rich 11:00-11:30 Strike It Rich 11:30-12:00 Strike It Rich 12:00-12:30 Strike It Rich 12:30-1:00 Strike It Rich 1:00-1:30 Strike It Rich 1:30-2:00 Strike It Rich 2:00-2:30 Strike It Rich 2:30-3:00 Strike It Rich 3:00-3:30 Strike It Rich 3:30-4:00 Strike It Rich 4:00-4:30 Strike It Rich 4:30-5:00 Strike It Rich 5:00-5:30 Strike It Rich 5:30-6:00 Strike It Rich 6:00-6:30 Strike It Rich 6:30-7:00 Strike It Rich 7:00-7:30 Strike It Rich 7:30-8:00 Strike It Rich 8:00-8:30 Strike It Rich 8:30-9:00 Strike It Rich 9:00-9:30 Strike It Rich 9:30-10:00 Strike It Rich 10:00-10:30 Strike It Rich 10:30-11:00 Strike It Rich 11:00-11:30 Strike It Rich 11:30-12:00 Strike It Rich 12:00-12:30 Strike It Rich 12:30-1:00 Strike It Rich 1:00-1:30 Strike It Rich 1:30-2:00 Strike It Rich 2:00-2:30 Strike It Rich 2:30-3:00 Strike It Rich 3:00-3:30 Strike It Rich 3:30-4:00 Strike It Rich 4:00-4:30 Strike It Rich 4:30-5:00 Strike It Rich 5:00-5:30 Strike It Rich 5:30-6:00 Strike It Rich 6:00-6:30 Strike It Rich 6:30-7:00 Strike It Rich 7:00-7:30 Strike It Rich 7:30-8:00 Strike It Rich 8:00-8:30 Strike It Rich 8:30-9:00 Strike It Rich 9:00-9:30 Strike It Rich 9:30-10:00 Strike It Rich 10:00-10:30 Strike It Rich 10:30-11:00 Strike It Rich 11:00-11:30 Strike It Rich 11:30-12:00 Strike It Rich 12:00-12:30 Strike It Rich 12:30-1:00 Strike It Rich 1:00-1:30 Strike It Rich 1:30-2:00 Strike It Rich 2:00-2:30 Strike It Rich 2:30-3:00 Strike It Rich 3:00-3:30 Strike It Rich 3:30-4:00 Strike It Rich 4:00-4:30 Strike It Rich 4:30-5:00 Strike It Rich 5:00-5:30 Strike It Rich 5:30-6:00 Strike It Rich 6:00-6:30 Strike It Rich 6:30-7:00 Strike It Rich 7:00-7:30 Strike It Rich 7:30-8:00 Strike It Rich 8:00-8:30 Strike It Rich 8:30-9:00 Strike It Rich 9:00-9:30 Strike It Rich 9:30-10:00 Strike It Rich 10:00-10:30 Strike It Rich 10:30-11:00 Strike It Rich 11:00-11:30 Strike It Rich 11:30-12:00 Strike It Rich 12:00-12:30 Strike It Rich 12:30-1:00 Strike It Rich 1:00-1:30 Strike It Rich 1:30-2:00 Strike It Rich 2:00-2:30 Strike It Rich 2:30-3:00 Strike It Rich 3:00-3:30 Strike It Rich 3:30-4:00 Strike It Rich 4:00-4:30 Strike It Rich 4:30-5:00 Strike It Rich 5:00-5:30 Strike It Rich 5:30-6:00 Strike It Rich 6:00-6:30 Strike It Rich 6:30-7:00 Strike It Rich 7:00-7:30 Strike It Rich 7:30-8:00 Strike It Rich 8:00-8:30 Strike It Rich 8:30-9:00 Strike It Rich 9:00-9:30 Strike It Rich 9:30-10:00 Strike It Rich 10:00-10:30 Strike It Rich 10:30-11:00 Strike It Rich 11:00-11:30 Strike It Rich 11:30-12:00 Strike It Rich 12:00-12:30 Strike It Rich 12:30-1:00 Strike It Rich 1:00-1:30 Strike It Rich 1:30-2:00 Strike It Rich 2:00-2:30 Strike It Rich 2:30-3:00 Strike It Rich 3:00-3:30 Strike It Rich 3:30-4:00 Strike It Rich 4:00-4:30 Strike It Rich 4:30-5:00 Strike It Rich 5:00-5:30 Strike It Rich 5:30-6:00 Strike It Rich 6:00-6:30 Strike It Rich 6:30-7:00 Strike It Rich 7:00-7:30 Strike It Rich 7:30-8:00 Strike It Rich 8:00-8:30 Strike It Rich 8:30-9:00 Strike It Rich 9:00-9:30 Strike It Rich 9:30-10:00 Strike It Rich 10:00-10:30 Strike It Rich 10:30-11:00 Strike It Rich 11:00-11:30 Strike It Rich 11:30-12:00 Strike It Rich 12:00-12:30 Strike It Rich 12:30-1:00 Strike It Rich 1:00-1:30 Strike It Rich 1:30-2:00 Strike It Rich 2:00-2:30 Strike It Rich 2:30-3:00 Strike It Rich 3:00-3:30 Strike It Rich 3:30-4:00 Strike It Rich 4:00-4:30 Strike It Rich 4:30-5:00 Strike It Rich 5:00-5:30 Strike It Rich 5:30-6:00 Strike It Rich 6:00-6:30 Strike It Rich 6:30-7:00 Strike It Rich 7:00-7:30 Strike It Rich 7:30-8:00 Strike It Rich 8:00-8:30 Strike It Rich 8:30-9:00 Strike It Rich 9:00-9:30 Strike It Rich 9:30-10:00 Strike It Rich 10:00-10:30 Strike It Rich 10:30-11:00 Strike It Rich 11:00-11:30 Strike It Rich 11:30-12:00 Strike It Rich 12:00-12:30 Strike It Rich 12:30-1:00 Strike It Rich 1:00-1:30 Strike It Rich 1:30-2:00 Strike It Rich 2:00-2:30 Strike It Rich 2:30-3:00 Strike It Rich 3:00-3:30 Strike It Rich 3:30-4:00 Strike It Rich 4:00-4:30 Strike It Rich 4:30-5:00 Strike It Rich 5:00-5:30 Strike It Rich 5:30-6:00 Strike It Rich 6:00-6:30 Strike It Rich 6:30-7:00 Strike It Rich 7:00-7:30 Strike It Rich 7:30-8:00 Strike It Rich 8:00-8:30 Strike It Rich 8:30-9:00 Strike It Rich 9:00-9:30 Strike It Rich 9:30-10:00 Strike It Rich 10:00-10:30 Strike It Rich 10:30-11:00 Strike It Rich 11:00-11:30 Strike It Rich 11:30-12:00 Strike It Rich 12:00-12:30 Strike It Rich 12:30-1:00 Strike It Rich 1:00-1:30 Strike It Rich 1:30-2:00 Strike It Rich 2:00-2:30 Strike It Rich 2:30-3:00 Strike It Rich 3:00-3:30 Strike It Rich 3:30-4:00 Strike It Rich 4:00-4:30 Strike It Rich 4:30-5:00 Strike It Rich 5:00-5:30 Strike It Rich 5:30-6:00 Strike It Rich 6:00-6:30 Strike It Rich 6:30-7:00 Strike It Rich 7:00-7:30 Strike It Rich 7:30-8:00 Strike It Rich 8:00-8:30 Strike It Rich 8:30-9:00 Strike It Rich 9:00-9:30 Strike It Rich 9:30-10:00 Strike It Rich 10:00-10:30 Strike It Rich 10:30-11:00 Strike It Rich 11:00-11:30 Strike It Rich 11:30-12:00 Strike It Rich 12:00-12:30 Strike It Rich 12:30-1:00 Strike It Rich 1:00-1:30 Strike It Rich 1:30-2:00 Strike It Rich 2:00-2:30 Strike It Rich 2:30-3:00 Strike It Rich 3:00-3:30 Strike It Rich 3:30-4:00 Strike It Rich 4:00-4:30 Strike It Rich 4:30-5:00 Strike It Rich 5:00-5:30 Strike It Rich 5:30-6:00 Strike It Rich 6:00-6:30 Strike It Rich 6:30-7:00 Strike It Rich 7:00-7:30 Strike It Rich 7:30-8:00 Strike It Rich 8:00-8:30 Strike It Rich 8:30-9:00 Strike It Rich 9:00-9:30 Strike It Rich 9:30-10:00 Strike It Rich 10:00-10:30 Strike It Rich 10:30-11:00 Strike It Rich 11:00-11:30 Strike It Rich 11:30-12:00 Strike It Rich 12:00-12:30 Strike It Rich 12:30-1:00 Strike It Rich 1:00-1:30 Strike It Rich 1:30-2:00 Strike It Rich 2:00-2:30 Strike It Rich 2:30-3:00 Strike It Rich 3:00-3:30 Strike It Rich 3:30-4:00 Strike It Rich 4:00-4:30 Strike It Rich 4:30-5:00 Strike It Rich 5:00-5:30 Strike It Rich 5:30-6:00 Strike It Rich 6:00-6:30 Strike It Rich 6:30-7:00 Strike It Rich 7:00-7:30 Strike It Rich 7:30-8:00 Strike It Rich 8:00-8:30 Strike It Rich 8:30-9:00 Strike It Rich 9:00-9:30 Strike It Rich 9:30-10:00 Strike It Rich 10:00-10:30 Strike It Rich 10:30-11:00 Strike It Rich 11:00-11:30 Strike It Rich 11:30-12:00 Strike It Rich 12:00-12:30 Strike It Rich 12:30-1:00 Strike It Rich 1:00-1:30 Strike It Rich 1:30-2:00 Strike It Rich 2:00-2:30 Strike It Rich 2:30-3:00 Strike It Rich 3:00-3:30 Strike It Rich 3:30-4:00 Strike It Rich 4:00-4:30 Strike It Rich 4:30-5:00 Strike It Rich 5:00-5:30 Strike It Rich 5:30-6:00 Strike It Rich 6:00-6:30 Strike It Rich 6:30-7:00 Strike It Rich 7:00-7:30 Strike It Rich 7:30-8:00 Strike It Rich 8:00-8:30 Strike It Rich 8:30-9:00 Strike It Rich 9:00-9:30 Strike It Rich 9:30-10:00 Strike It Rich 10:00-10:30 Strike It Rich 10:30-11:00 Strike It Rich 11:00-11:30 Strike It Rich 11:30-12:00 Strike It Rich 12:00-12:30 Strike It Rich 12:30-1:00 Strike It Rich 1:00-1:30 Strike It Rich 1:30-2:00 Strike It Rich 2:00-2:30 Strike It Rich 2:30-3:00 Strike It Rich 3:00-3:30 Strike It Rich 3:30-4:00 Strike It Rich 4:00-4:30 Strike It Rich 4:30-5:00 Strike It Rich 5:00-5:30 Strike It Rich 5:30-6:00 Strike It Rich 6:00-6:30 Strike It Rich 6:30-7:00 Strike It Rich 7:00-7:30 Strike It Rich 7:30-8:00 Strike It Rich 8:00-8:30 Strike It Rich 8:30-9:00 Strike It Rich 9:00-9:30 Strike It Rich 9:30-10:00 Strike It Rich 10:00-10:30 Strike It Rich 10:30-11:00 Strike It Rich 11:00-11:30 Strike It Rich 11:30-12:00 Strike It Rich 12:00-12:30 Strike It Rich 12:30-1:00 Strike It Rich 1:00-1:30 Strike It Rich 1:30-2:00 Strike It Rich 2:00-2:30 Strike It Rich 2:30-3:00 Strike It Rich 3:00-3:30 Strike It Rich 3:30-4:00 Strike It Rich 4:00-4:30 Strike It Rich 4:30-5:00 Strike It Rich 5:00-5:30 Strike It Rich 5:30-6:00 Strike It Rich 6:00-6:30 Strike It Rich 6:30-7:00 Strike It Rich 7:00-7:30 Strike It Rich 7:30-8:00 Strike It Rich 8:00-8:30 Strike It Rich 8:30-9:00 Strike It Rich 9:00-9:30 Strike It Rich 9:30-10:00 Strike It Rich 10:00-10:30 Strike It Rich 10:30-11:00 Strike It Rich 11:00-11:30 Strike It Rich 11:30-12:00 Strike It Rich 12:0						

Recent Bride



— B. E. Wade

Mrs. John Leary, the former Betty-Lou Kappeler of East Haven, was married recently in St. Clare's Church. She is the daughter of Mr. and Mrs. George Kappeler, of 35 Hobson St. The groom is the son of Mrs. John Leary and the late Mr. Leary of Waterbury.

Local Boy Scout Troops Prepare For Camp-O-Rama Fri.

East Haven Boy Scouts and others are ready and waiting for the Camp-O-Rama and show to be held this week end at Yale Field and vicinity by Quinipiac Council of Boy Scouts, a United Fund agency.

More than 4,000 Scouts, from Cub to Explorer, and from Milford to Madison, are expected to take part in various activities of the week end.

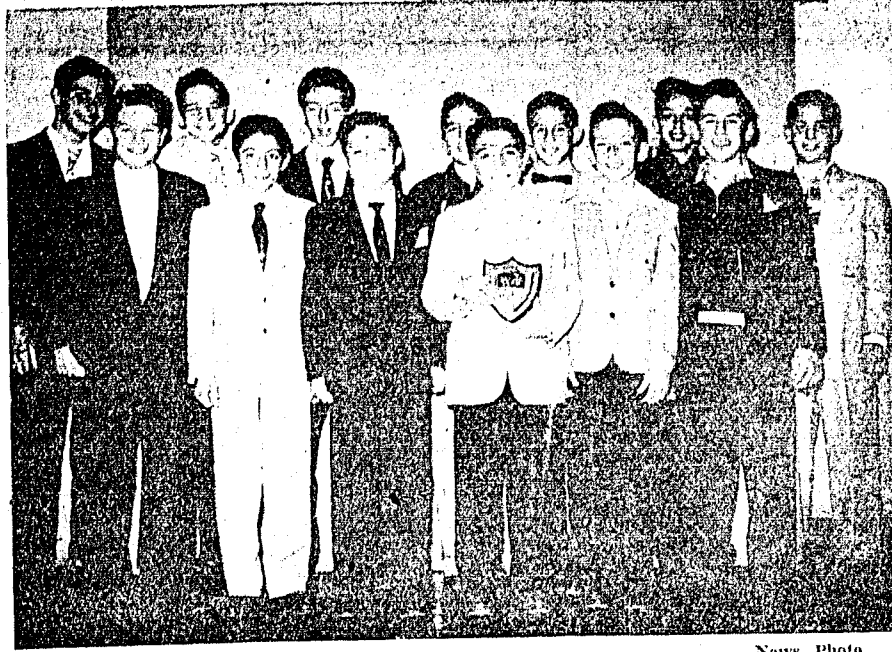
Here's the schedule, Friday afternoon nearly 1,000 Boy Scouts will pitch camp in the parking area east of Yale Bowl and they plan to stay through Sunday noon.

Saturday afternoon at 2 p.m. there will be a Scouting show. This will run about two and one-half hours and will be held in the Yale varsity baseball field. The public is especially invited to attend this event.

Quinipiac Council has sponsored many shows and Camp-O-Ramas before but this is the first time that the two have been conducted jointly.

Health Association Meets The Connecticut Association for Health, Physical Education and Recreation will hold its ninth annual conference at New Haven State Teachers College in the Physical Education building on Saturday, from 9:00 a.m. until 5:00 p.m.

Gerrish Basketball Champs



—News Photo

Members of the Gerrish Ave. basketball team pose with the plaque which was awarded to them last week by Joseph Melillo, elementary physical education supervisor, in recognition of their winning the inter-school basketball tournament. Their names read left to right as follows: front row, John Gattland, Ralph Scala, Salvatore Paolillo, James Weir and William Messina; back row, William Maguin, William Barker, Vincent Virgilio, Paul Kondrath, William Pite, James Terrazano and Frank Hopson. Two members were not present for the picture taking. They are James Murgo and James Fryer.

Board Names 5 New Teachers; Three Resign

Appointments of two new teachers and approval for appointment of three others if they accept posts, here were voted by the Board of Education at its meeting Friday. The teachers were recommended by Schools Supt. R. Vernon Hays.

Resignations of three teachers from the school system were also accepted "with regret" by the board.

The two appointed teachers were as follows: Mrs. Joyce Alkire, of 161 Wolcott St., New Haven. A graduate of New Haven State Teachers College in 1950 she taught for three years in East Haven schools. She is being re-appointed after an absence of one year.

Herbert Fritz, of Bronx, New York. He is presently attending New Britain State Teachers College and will graduate next month. Names of other teachers will be released when they accept final appointment.

The following teachers have submitted their resignations effective the end of this school year: Mrs. Edna Schultz, a teacher at grade 7 in Union School; Mrs. Elvira Cavallere, grade one at Tuttle School; and Mrs. JoAnn Cooper, Grade 2 at Momaugh School.

Reasons of resignation were all personal. Two of the teachers are moving to other towns and other school systems.

Winners of Union Poster, And Safety Contests Announced

Marilyn Nuzzo was the winner of first prize in the May Fair poster contest conducted by the Union School P.T.A. She and other winners received their awards at a Safety Council assembly of pupils in the Union School Friday afternoon.

Mrs. Joseph Di Mezza of the parent-teacher group presented the awards to Miss Nuzzo and other winners. Second prize was presented to Margaret Parker and third prize, to Roberta French, Cathy Frawley, Velma Quick and Heather Colwell. Honorable mention was won by Sharon O'Connell, Paumond Parico, Iris Volt, Terry Holcombe, Carolyn Smith and Annette Nuzzello. "Hazard Eliminator" winners

Pins from the New Haven Safety Council were awarded to 10 pupils in Grade four who won a Hazard Eliminator contest. They had submitted the winning reports on a hazard they had discovered and removed in their own homes.

The pins were presented by their teacher, Mrs. George McManus. The winners were: Lee Chamberlain, James Coyne, Caroline Berger, Francis Mirabella, Nancy Smith, Nicholas Mignone, Gene Charman, Rita Hunt, Margaret O'Meara, Kathleen Leissner and Barbara Arabolus.

The assembly heard a brief talk on: "Why Do Accidents Occur" by Jonathan Czar, editor of the NEWS.

EHHS Class of '49 To Hold 5th Annual Reunion On June 9

The fifth year reunion of the High School Class of 1949 will be held June 9 at the Weeping Willows Restaurant. The reunion will be at a formal dinner-dance to open at 7 p. m. Invitations have been sent to all class members whose addresses are known. Mrs. Angelo Esposito, of 350 Orchard St., New Haven, is in charge of reservations. Deadline was Sunday.

Woman's Club Holds Tea For New Members

A tea was held in the Hagaman Memorial Library Sunday afternoon for the new members of the East Haven Woman's Club. Mrs. Theodore French, membership chairman was in charge of the affair with Mrs. Albert Jacob as co-chairman.

Others assisting were Mrs. Andrew Kmetz, Mrs. Kenneth Griffiths, Mrs. Frank McDonald, Mrs. Vincent Fasano, Mrs. Forrest Doten, and Mrs. Roy Wilson. Mrs. Fred Wolfe Jr. president and Mrs.

Willis Hendricks, past president poured. Following are the new members who joined the club during the year: Mrs. Robert Thomas, Mrs. John O'Dea, Mrs. Allen Hubbard, Mrs. John Pryor, Mrs. Anthony DeMayo, Mrs. John Mulhern, Mrs. John Rutolo, Mrs. R. Vernon Hays, Mrs. Francis Marink, Mrs. John Gallagher, Mrs. Thomas Webster, Mrs. Edward Pite, Mrs. Lawrence Walpole, Mrs. William Akers, Mrs. Frank Martin, Mrs. Frank Clifford and Mrs. Robert Kollerher.

Speeding on U. S. streets and highways injured nearly 700,000

Advertisement for Weeping Willows Restaurant. Located at Laurel Street, East Haven. Tel. HO 7-5576. Serves complete dinners daily from 5:30 to 9:30 except Monday. Sunday from 12:00 to 8:30 P.M. Dancing Saturday Nites to the Music of Frankie Durazzo's Orchestra. Features 'Continental Table Night' every Tuesday from 5 to 10 P.M. All you can eat for \$2.50 per person. Make Reservations.

EAST HAVEN Business Directory

Advertisement for George A. Sisson Insurance. General Insurance, Fire - Bonds, Automobile Casualty. Phone HO 7-5218, 439 Main St., East Haven.

Advertisement for Linden Convalescent Hospital. Mrs. Kay Anastasio, Dir. Registered Nurses in Attendance Day and Night. Carefully Prepared Meals and Diets. Phone HO 7-5828, 83 Main St., East Haven.

Advertisement for Ralph P. Castellon General Insurance. ON YOUR LIFE—YOUR HOME YOUR AUTO YOUR BUSINESS. 264 MAIN ST., EAST HAVEN HO 7-7896

Advertisement for Gen's Laundry and Dry Cleaning. Complete Laundry Service FREE DELIVERY! 191 Main St. HO 7-7458

Advertisement for Frank A. Barker General Contractor. "General Contractor" 1 Car Garage Complete as low as \$675.00. 5 yrs. to Pay Tel. HO 7-0601 or MA 4-6658

Advertisement for International Trucks. "Authorized Dealer" East Haven Green Garage. 175 Main St. HO 7-3735

Advertisement for Hotpoint & Universal Appliances. See Them Now On Display! For Appointment Call HO 7-1854. LOW DOWN PAYMENT EASY TERMS. Open Evenings & Sat. Only A. C. P. Electric Service, Inc. 467 Main St. East Haven

Advertisement for Southern New England Telephone Company. RUN... or RELAX? Picture yourself chatting at ease in the peace and privacy of your own room. The convenience of an extension telephone is something you'll appreciate several times a day—and they're available now. Just call the telephone business office and request an installation. THE SOUTHERN NEW ENGLAND TELEPHONE COMPANY

Large advertisement for First National Stores. Features various food products like Veal Legs and Rump (LB 49c), Loin Veal Chops (LB 85c), Rib Veal Chops (LB 69c), Fresh Fowl (41c), Fresh Chickens (39c), Smoked Butts (85c), Smoked Tongues (53c), Finest Liverwurst (55c), Sandwich Favorite Peanut Butter & Honey, O-Cel-O Sponge (1/2 price), Oven Fresh Bakery Specials (Irish Raisin Bread 21c, Apple Sauce Cake 25c, Coffee Cake 29c), Fresh Fruits and Vegetables (Pineapple 19c, Lemons 4 for 15c, Grapefruit 4 for 25c, Cucumbers 3 for 17c, Broccoli 25c, Green Beans 2 lbs. 33c, Corn 5 ears 29c, Onions 3 lbs 19c), and Big Money Saving Values (Finest Ketchup 2 14-oz BTLs 35c, Tomato Juice 44-oz CAN 19c, Evangeline Milk 4 1 1/2-oz CANS 47c, Angel Soft 2 PKGS OF 400 39c, Peaches 2 30-oz CANS 69c, Dill Pickles QT JAR 25c, Grapefruit Juice 3 18-oz CANS 25c, Tomatoes 2 28-oz CANS 39c).